



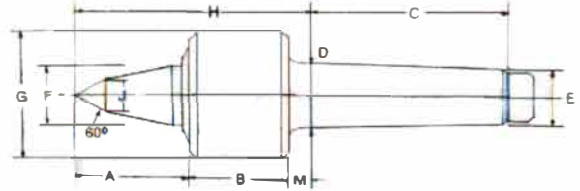
PIPER TOOLS AUSTRALIA PTY LTD



2023 LIVE CENTRES

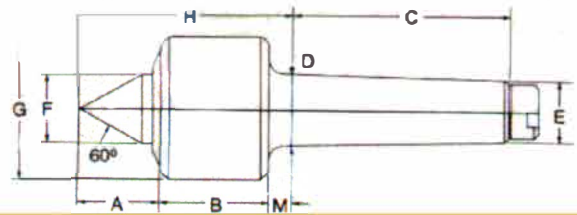
PIPER C SERIES – Heavy Duty Extended Cone

Model No.	Morse Taper No.	A mm	B mm	C mm	D mm	E mm	F mm	G mm	H mm	J mm	M mm	Load Carrying Capacity	Spindle Runout	Price
C-303-HD	3	47	51	80	24	20	25	60	89	12	10	200kg	3 Microns	
C-304-HD	4	57	54	96	31	26	28	63	97	12.5	10	400kg	3 Microns	
C-305-HD	5	64	71	118	44	38	43	95	136	18	13	1000kg	3 Microns	
C-306-HD	6	97	95	187	63	54	60	126	176	27	19	6000kg	5 Microns	
C-307-HD	7	97	95	187	83	71	60	126	176	27	19	6000kg	5 Microns	



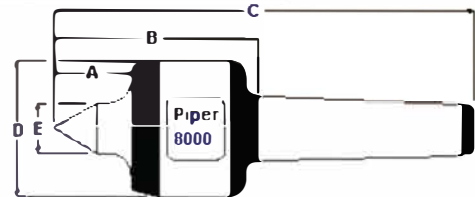
PIPER R SERIES – Heavy Duty

Model No.	Morse Taper No.	A mm	B mm	C mm	D mm	E mm	F mm	G mm	H mm	M mm	Load Carrying Capacity	Spindle Runout	Price
R-303-HD	3	32	51	80	24	20	25	60	89	10	200kg	3 Microns	
R-304-HD	4	36	54	96	31	26	28	63	97	10	635kg	3 Microns	
R-305-HD	5	49	71	118	44	38	43	95	136	13	3000kg	3 Microns	
R-306-HD	6	67	95	187	63	54	60	126	176	19	6000kg	5 Microns	
R-307-HD	7	67	95	187	83	71	60	126	176	19	6000kg	5 Microns	



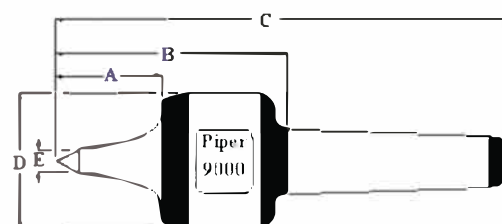
PIPER 8000 SERIES – High Speed

Model No.	Morse Taper	A mm	B mm	C mm	D mm	E mm	Max Work Piece Weight	Max Recommended Speed	Spindle Runout	Price
8003	3	30	92	173	52	20	450kg	9000RPM	3 Microns	
8004	4	38	115	210	66	24	950kg	7500RPM	3 Microns	
8005	5	50	131	246	80	30	1500kg	6100RPM	3 Microns	



PIPER 9000 SERIES – High Speed

Model No.	Morse Taper	A mm	B mm	C mm	D mm	E mm	Max Work Piece Weight	Max Recommended Speed	Spindle Runout	Price
9003	3	40	92	173	52	8	350kg	9000RPM	3 Microns	
9004	4	50	115	210	66	10	700kg	7500RPM	3 Microns	
9005	5	60	131	246	80	12	1150kg	6100RPM	3 Microns	





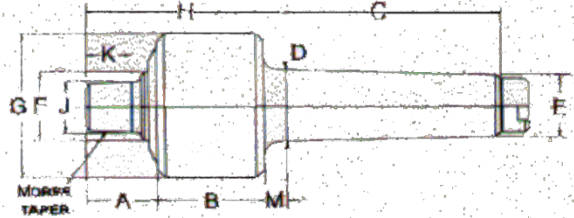
PIPER TOOLS AUSTRALIA PTY LTD

2023 LIVE CENTRES



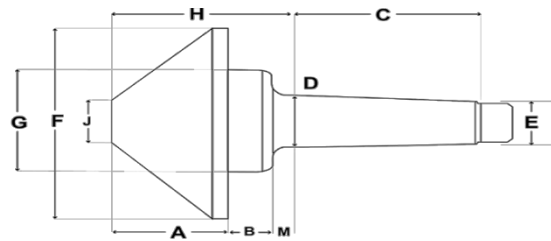
PIPER A SERIES

Model No.	Morse Taper	A mm	B mm	C mm	D mm	E mm	F mm	G mm	H mm	J mm	M mm	Load Capacity	Spindle Runout	Price
A-402-HD	2	33	44.5	62	18	15	21.5	49.5	83	21	8	170kgs	3 microns	
A-403-HD	3	33	51	80	24	20	25	60	89	21	10	200kgs	3 microns	
A-404-HD	4	3	54	96	31	26	28	63	97	21	10	635kgs	3 microns	
A-405-HD	5	51	71	118	44	38	43	95	136	31	13	1500kgs	3 microns	
A-406-HD	6	65	95	187	63	54	60	126	176	34	19	3000kg	5 microns	



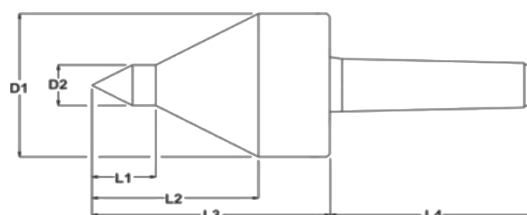
PIPER B SERIES

Model No.	Morse Taper	A mm	B mm	C mm	D mm	E mm	F mm	G mm	H mm	J mm	M mm	Price
B-601 -HD	2	44	30	62	18	15	83	51	83	21	8	
B-602-HD	2	57	17	62	18	15	108	51	83	21	8	
B-601-HD	3	44	36	76	24	20	83	60	90	21	10	
B-602-HD	3	57	24	76	24	20	108	60	90	21	10	
B-607-HD	3	78	3	76	24	20	159	60	90	21	10	
B-601-HD	4	44	40	95	31	26	83	64	94	21	10	
B-602-HD	4	57	27	95	31	26	108	64	94	21	10	
B-607-HD	4	78	6	95	31	26	159	64	94	21	10	
B-608-HD	5	64	59	121	44	38	133	95	135	38	13	
B-609-HD	5	78	44	121	44	38	159	95	135	38	13	
B-610-HD	5	103	19	121	44	38	210	95	135	38	13	
B-611-HD	6	71	86	181	63	54	159	127	176	51	19	
B-612-HD	6	98	59	181	63	54	210	127	176	51	19	
B-613-HD	6	122	35	181	63	54	260	127	176	51	19	



PIPER PL SERIES

Part No.	Morse Taper	D1 mm	D2 mm	L1 mm	L2 mm	L3 mm	L4 mm	Price
PL204/3	3	70	16	23	43	90	108	
PL204/4	4	70	20	29	55	110	108	
PL204/5	5	70	20	29	55	110	131	
PL205/4	4	90	37	46.3	92.37	143.5	108	
PL205/5	5	90	37	46.3	92.37	143.5	131	





PIPER TOOLS AUSTRALIA PTY LTD

2023 COUNTERSINKS



90° 4 Flute Countersink

PART No.	Max Dia.	Shank Dia.	Price
CS90-260	.260"	.200"	
CS90-323	.323"	.250"	
CS90-385	.385"	.250"	
CS90-510	.510"	.375"	
CS90-635	.635"	.375"	
CS90-760	.760"	.500"	
CS90-885	.885"	.500"	
CS90-1010	1.010"	.500"	
CS90-1260	1.260"	.500"	
CS90-1510	1.510"	.625"	

60° 4 Flute Countersink

PART No.	Max Dia.	Shank Dia.	Price
CS60-260	.260"	.200"	
CS60-323	.323"	.250"	
CS60-385	.385"	.250"	
CS60-510	.510"	.375"	
CS60-635	.635"	.375"	
CS60-760	.760"	.500"	
CS60-885	.885"	.500"	
CS60-1010	1.010"	.500"	
CS60-1260	1.260"	.500"	

100° 4 Flute Countersink

PART No.	Max Dia.	Shank Dia.	Price
CS100-260	.260"	.200"	
CS100-323	.323"	.250"	
CS100-385	.385"	.250"	
CS100-510	.510"	.375"	
CS100-635	.635"	.375"	
CS100-760	.760"	.500"	
CS100-885	.885"	.500"	
CS100-1010	1.010"	.500"	
CS100-1260	1.260"	.500"	

82° 4 Flute Countersink

Part No.	Max Dia.	Shank Dia.	Price
CS82-260	.260"	.200"	
CS82-323	.323"	.250"	
CS82-385	.385"	.250"	
CS82-510	.510"	.375"	
CS82-635	.635"	.375"	
CS82-760	.760"	.500"	
CS82-885	.885"	.500"	
CS82-1010	1.010"	.500"	
CS82-1260	1.260"	.500"	
CS82-1510	1.510"	.625"	

120° 4 Flute Countersink

Part No.	Max Dia.	Shank Dia.	Price
CS120-260	.260"	.200"	
CS120-323	.323"	.250"	
CS120-385	.385"	.250"	
CS120-510	.510"	.375"	
CS120-635	.635"	.375"	
CS120-760	.760"	.500"	
CS120-885	.885"	.500"	
CS120-1010	1.010"	.500"	
CS120-1260	1.260"	.500"	



82° Cross Hole Countersink

Part No.	Max Dia.	Shank Dia.	Price
CH82-37	15-37mm	14mm	
CH82-50	25-50mm	16mm	

90° Cross Hole Countersink

CH90-37	15-37mm	14mm	
CH90-50	25-50mm	16mm	